



## Sector: Healthcare – Mental Health

### Case Study: ACH Worthing



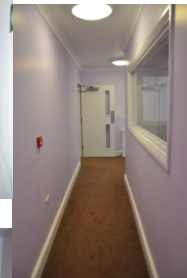
### The Challenge

To convert a residential care home for the elderly into a 10 bedroom, high specification mental health unit, complete with sensory room. Situated in a residential area with restricted access, the project required a sensitive approach. The work involved roof repairs, internal renovations, an extension and unexpected asbestos removal.

### The Result

Our extensive knowledge of the high level of specifications required to meet the needs of the clients' customers turned a complex job into a model project. The site was the first to win the R&S in house Health and Safety Award and was a showcase for RSPM when working towards gaining our most recent accreditations. Our hard work in working within the local community was reflected in our high scoring Considerate Constructors inspection. Even the discovery of asbestos, undetected by the mandatory report, failed to hinder progress and we were still able to bring the project in, on time and on budget, with the highest level of finish and workmanship.

ACH project feedback stated *"we can ask no more"*



<b>COST:</b>	£ 570k
<b>TIMEFRAME:</b>	22 wks
<b>BUILD:</b>	refurbishment

### R&S Projects Management

East Office, Broomfield Park, Coggeshall Road, Earsl Colne, Colchester, Essex, CO6 2JX, UK

West Office, County Court, Queen Street Bridgewater, Somerset TA6 4DA



Registered through:  
**EXOR ACCREDITATION**

